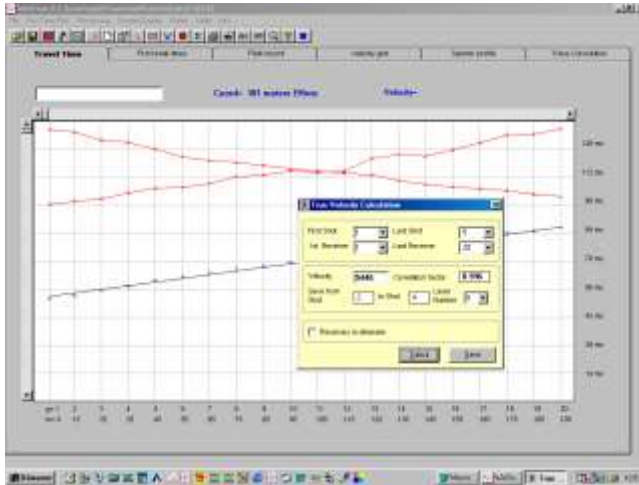


# WinSism Refraction Seismic interpretation software for Windows®



**WinSism** run under Windows 32 and 64 bits (98, 2000 and Xp, VISTA, Seven, 8)

**WinSism** is your Windows solutions to process Seismic refraction. The software is user friendly and can be used very intuitively.

With **WinSism** you can display SEG-2, SEG-Y, ABEM, OYO, PASI and Geometrics records. first break picking is very easy and precise on the screen. On screen corrections are possible for FBP.

After your enter field geometry, travel time assembly takes few seconds and data can be corrected on a build-in spreadsheet. Shots and

receivers can have any geometry and elevations. All data are recorded in an ASCII file (maximum 200 receivers and 50 shots).

The main features of **WinSism** are:

<p><b>For processing</b></p> <ul style="list-style-type: none"> <li>• Trace phantoming</li> <li>• True velocity</li> <li>• Velocity computation (regression fit)</li> <li>• Velocity computation (linear)</li> <li>• Interactive FBP</li> <li>• Easy geometry input</li> </ul>	<p><b>For computation</b></p> <ul style="list-style-type: none"> <li>• Intercept time method</li> <li>• Critical distance method</li> <li>• <b>ABC/Delay method</b></li> <li>• <b>GRM Method</b></li> </ul>
<p><b>For display and printing</b></p> <ul style="list-style-type: none"> <li>• Travel time with precise scale</li> <li>• Preview with zooming</li> <li>• WMF export of all plots</li> <li>• Color Seismic profile with depth</li> <li>• Computation results</li> <li>• Export to RAYFRACT, PLOTREFRA, SEISOPT</li> <li>• Field record and Travel Time display</li> </ul>	<p><b>WinSism</b> allows all usual operations for refraction processing, graphically on the screen. A manual and many tags are available. <b>WinSism</b> checks all data inputs against errors. Default values are proposed. A manual with demo data, processing explanations and used formulas is provided with <b>WinSism</b>. W-GeoSoft CD-ROM contains videos and PowerPoint explaining all processing steps</p>

